

# Hampshire Water Transfer and Water Recycling Project

## Environmental Statement – Figure 8.10 National Vegetation Classification within the field survey area

**VOLUME NUMBER: 6**

**PLANNING INSPECTORATE SCHEME NUMBER: WA010002**

**APPLICATION DOCUMENT REFERENCE: 6.3**

**APFP REGULATION: 5(2)(a)**

May 2026

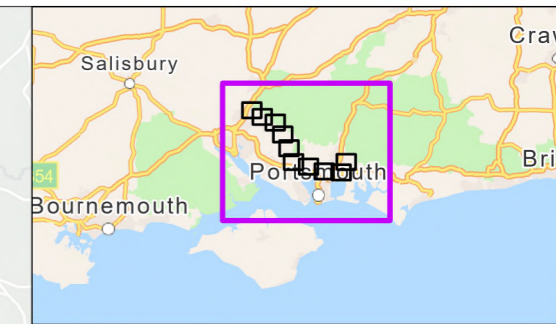
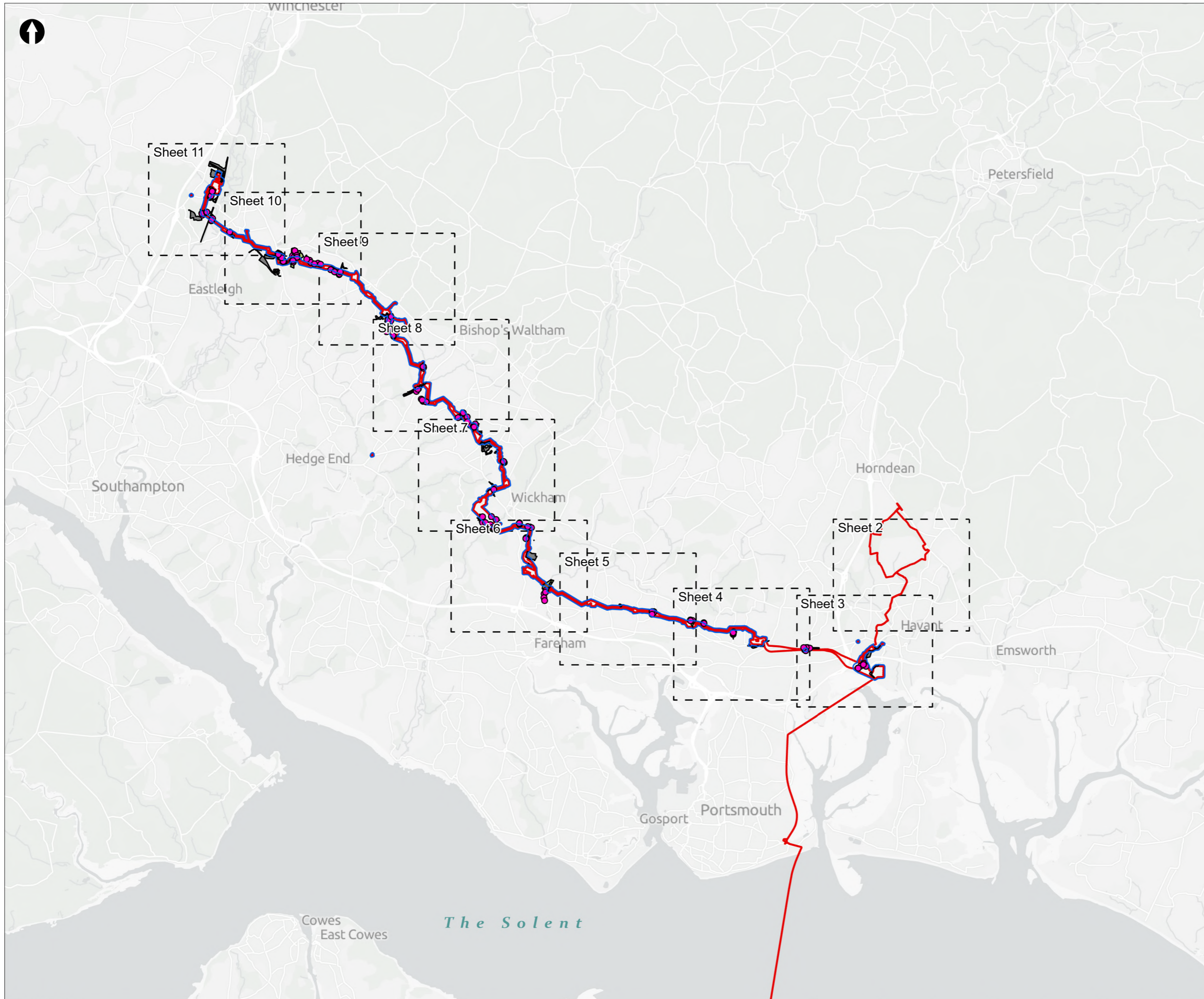
Version 0



from  
**Southern  
Water** 

The Southern Water logo consists of three stylized, wavy blue lines of varying lengths, positioned to the right of the text 'Southern Water'.





Order Limits  
 Sheet Extent Boxes 1:15K  
**National Vegetation Classification Survey**  
 Field survey area  
 Surveyed  
 Not surveyed  
● Quadrat locations

**10** - Site number  
**Q1** - Quadrat number

Coordinate system: British National Grid; Datum: OSGB 1936  
 Data sources: © Crown copyright and database rights 2026 Ordnance Survey 0100031673. Sources: Esri, TomTom, Garmin, FAO, NOAA, USGS, © OpenStreetMap contributors, and the GIS User Community, Contains OS data © Crown Copyright and database right 2026. Contains data from OS Zoomstack

PROJECT TITLE  
 Hampshire Water Transfer and Water Recycling Project

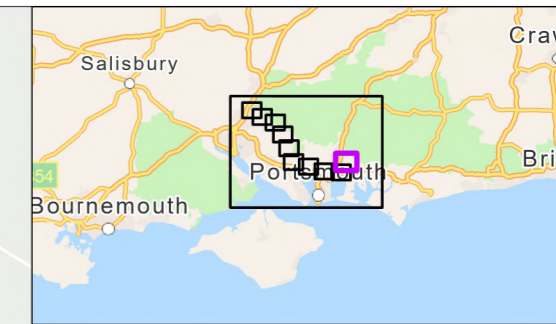
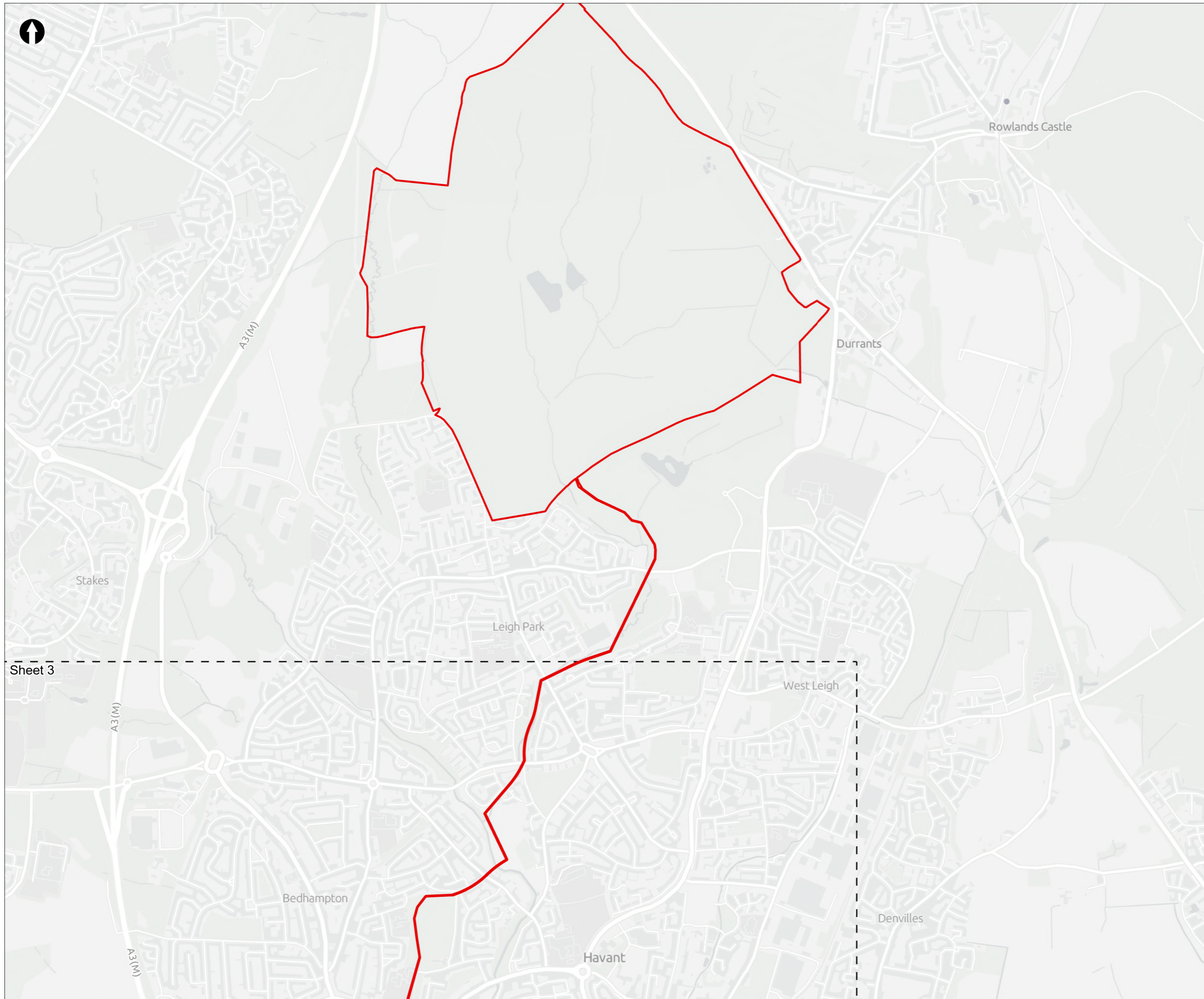


Figure 8.10  
 National Vegetation Classification within the field survey area  
 Sheet 1 of 11

Drawn <b>MW</b>	GIS Checked <b>DL</b>	Checked <b>MP</b>	Approved <b>AK</b>
Scale at A3 <b>1:134,000</b>	Status <b>Final</b>	Revision <b>05</b>	Security <b>STD</b>

Drawing Number  
**PC5223-RHD-ES-ZZ-D-Z-0035**





Order Limits  
 Sheet Extent Boxes 1:15K

**10** - Site number  
**Q1** - Quadrat number

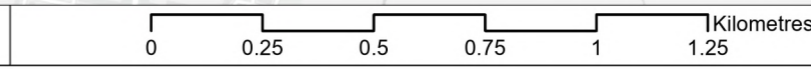
Coordinate system: British National Grid; Datum: OSGB 1936  
 Data sources: © Crown copyright and database rights 2026 Ordnance Survey 0100031673. Sources: Esri, TomTom, Garmin, FAO, NOAA, USGS, © OpenStreetMap contributors, and the GIS User Community, Contains OS data © Crown Copyright and database right 2026. Contains data from OS Zoomstack

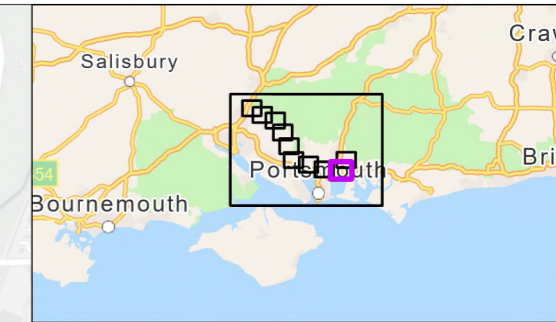
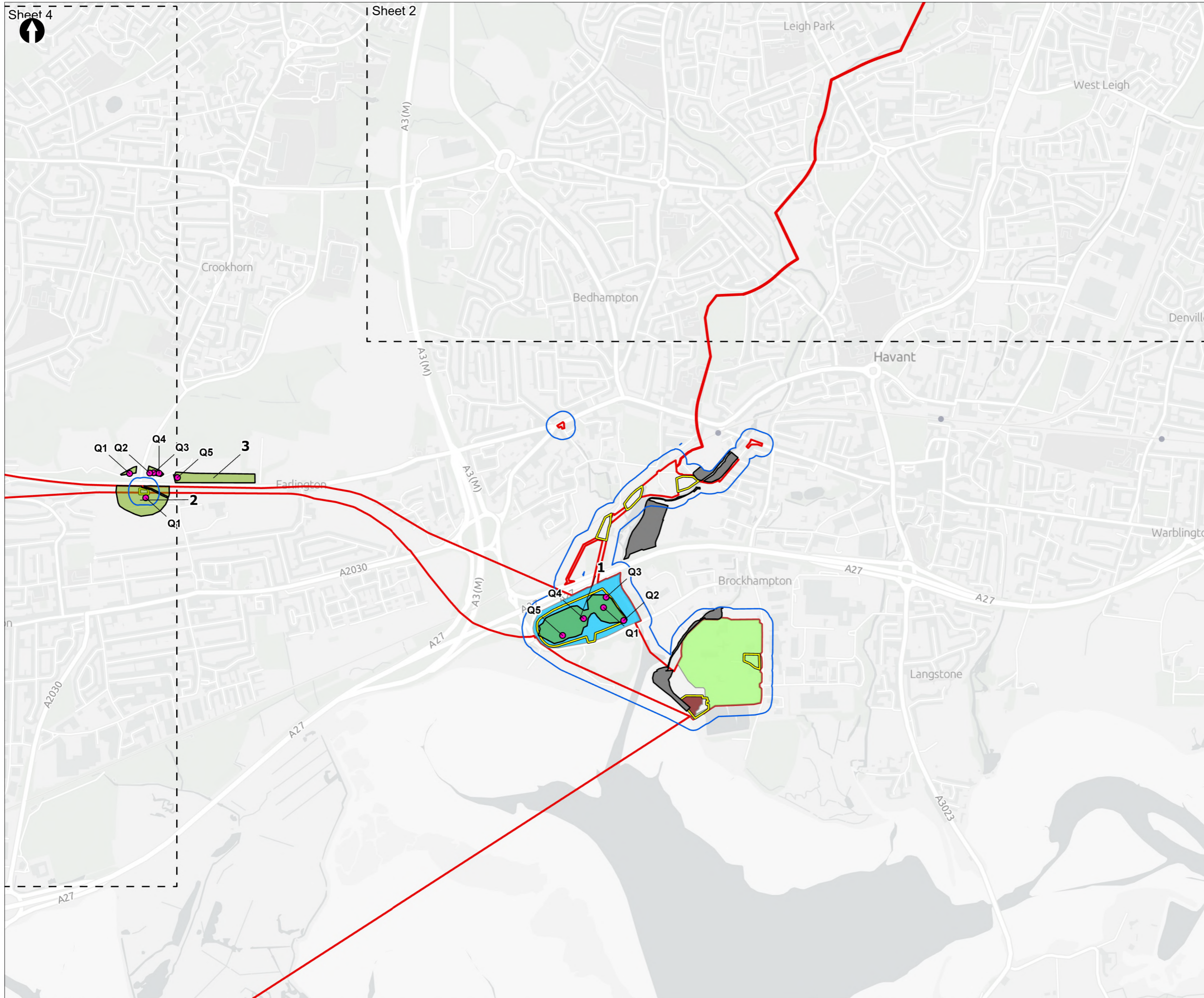
PROJECT TITLE  
 Hampshire Water Transfer and Water Recycling Project



**Figure 8.10**  
 National Vegetation Classification within the field survey area  
 Sheet 2 of 11

Drawn <b>MW</b>	GIS Checked <b>DL</b>	Checked <b>MP</b>	Approved <b>AK</b>
Scale at A3 <b>1:17,000</b>	Status <b>Final</b>	Revision <b>05</b>	Security <b>STD</b>





- Order Limits
  - Sheet Extent Boxes 1:15K
  - Proposed Development components**
  - Budds Farm Wastewater Treatment Works
  - Limits of Deviation for Budds Farm Pumping Station
  - Water Recycling Plant site
  - Construction compounds
  - National Vegetation Classification Survey**
  - Field survey area
  - Surveyed
  - Not surveyed
  - Quadrat locations
- 10** - Site number  
**Q1** - Quadrat number

Coordinate system: British National Grid; Datum: OSGB 1936  
 Data sources: © Crown copyright and database rights 2026 Ordnance Survey 0100031673. Sources: Esri, TomTom, Garmin, FAO, NOAA, USGS, © OpenStreetMap contributors, and the GIS User Community, Contains OS data © Crown Copyright and database right 2026. Contains data from OS Zoomstack

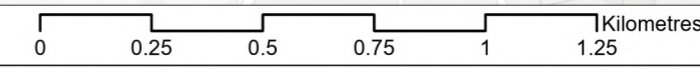
PROJECT TITLE  
 Hampshire Water Transfer and Water Recycling Project

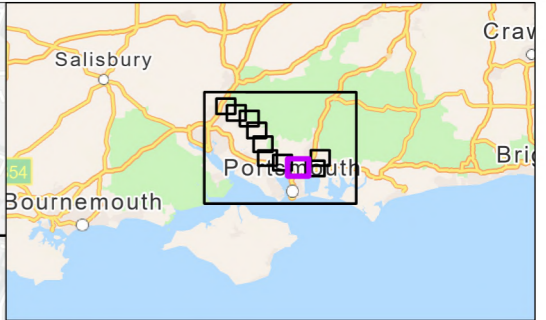
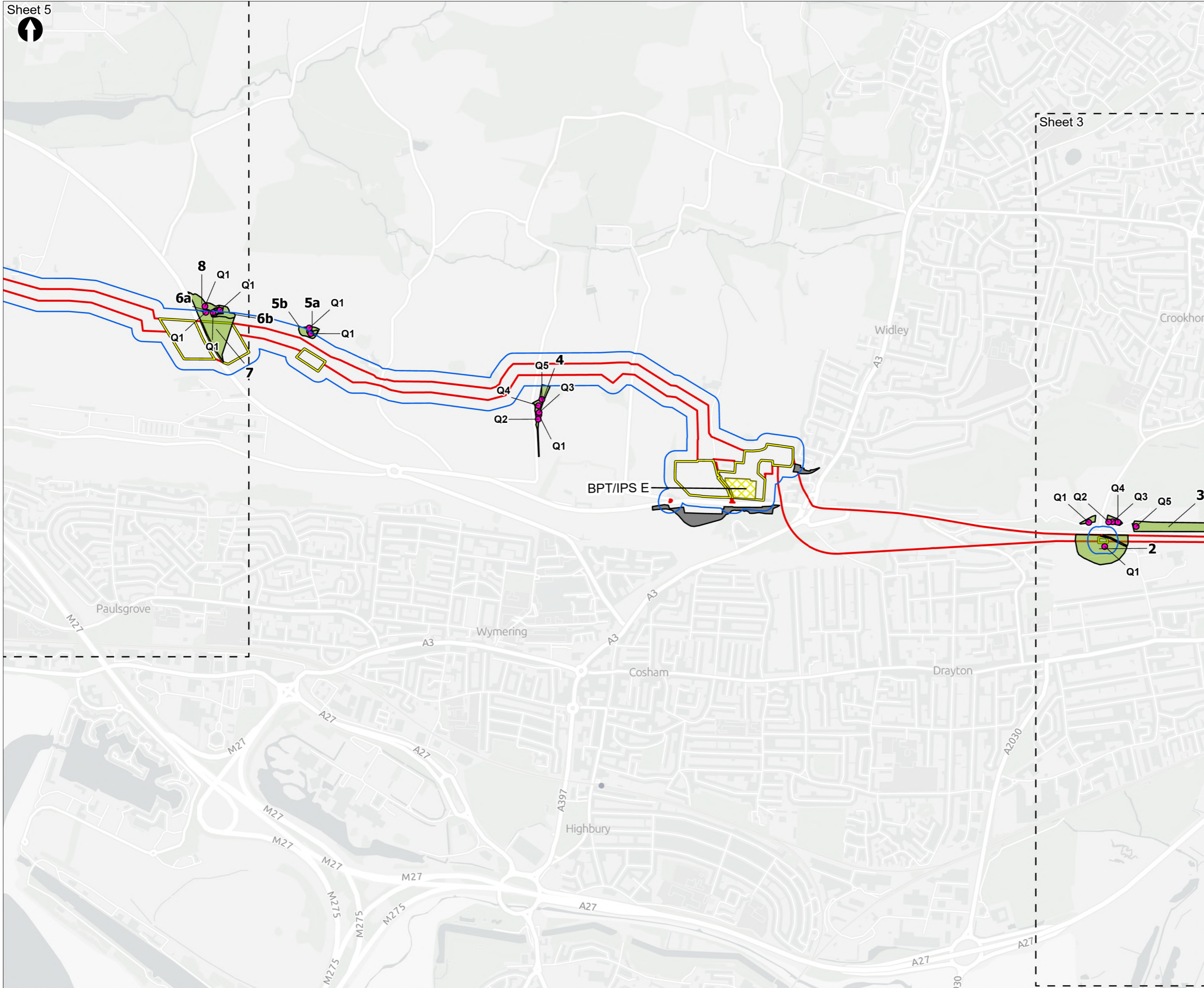


Figure 8.10  
 National Vegetation Classification within the field survey area  
 Sheet 3 of 11

Drawn <b>MW</b>	GIS Checked <b>DL</b>	Checked <b>MP</b>	Approved <b>AK</b>
Scale at A3 <b>1:17,000</b>	Status <b>Final</b>	Revision <b>05</b>	Security <b>STD</b>

Drawing Number  
**PC5223-RHD-ES-ZZ-D-Z-0035**





- Order Limits
- Sheet Extent Boxes 1:15K
- Construction compounds
- National Vegetation Classification Survey**
- Field survey area
- Surveyed
- Not surveyed
- Quadrat locations
- Above Ground Plant**
- Break Pressure Tank & Intermediate Pumping Station

**10** - Site number  
**Q1** - Quadrat number

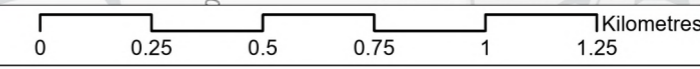
Coordinate system: British National Grid; Datum: OSGB 1936  
 Data sources: © Crown copyright and database rights 2026 Ordnance Survey 0100031673. Sources: Esri, TomTom, Garmin, FAO, NOAA, USGS, © OpenStreetMap contributors, and the GIS User Community, Contains OS data © Crown Copyright and database right 2026. Contains data from OS Zoomstack

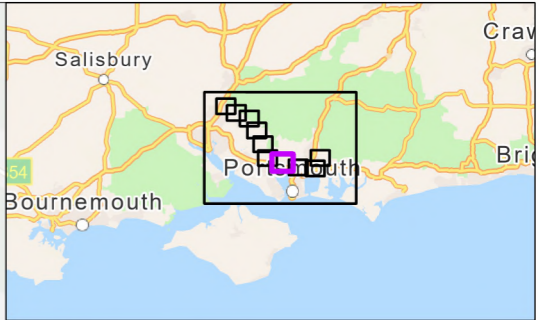
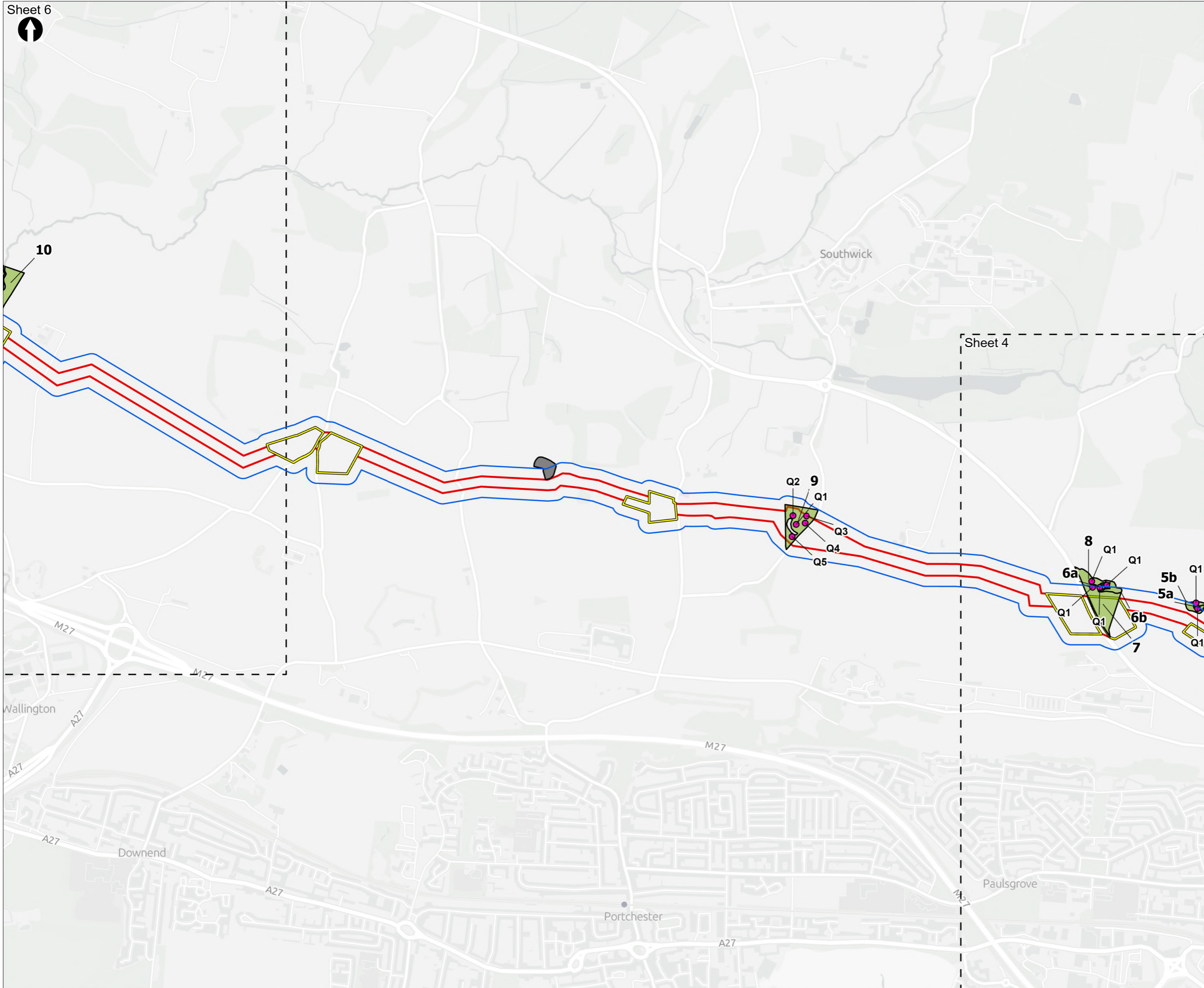
PROJECT TITLE  
 Hampshire Water Transfer and Water Recycling Project



Figure 8.10  
 National Vegetation Classification within the field survey area  
 Sheet 4 of 11

Drawn <b>MW</b>	GIS Checked <b>DL</b>	Checked <b>MP</b>	Approved <b>AK</b>
Scale at A3 1:17,000	Status <b>Final</b>	Revision <b>05</b>	Security <b>STD</b>





- Order Limits
- Sheet Extent Boxes 1:15K
- Construction compounds
- National Vegetation Classification Survey**
- Field survey area
- Surveyed
- Not surveyed
- Quadrat locations

**10** - Site number  
**Q1** - Quadrat number

Coordinate system: British National Grid; Datum: OSGB 1936  
 Data sources: © Crown copyright and database rights 2026 Ordnance Survey 0100031673. Sources: Esri, TomTom, Garmin, FAO, NOAA, USGS, © OpenStreetMap contributors, and the GIS User Community, Contains OS data © Crown Copyright and database right 2026. Contains data from OS Zoomstack

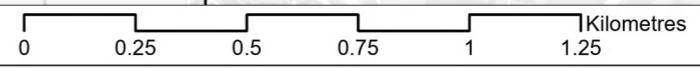
PROJECT TITLE  
 Hampshire Water Transfer and Water Recycling Project

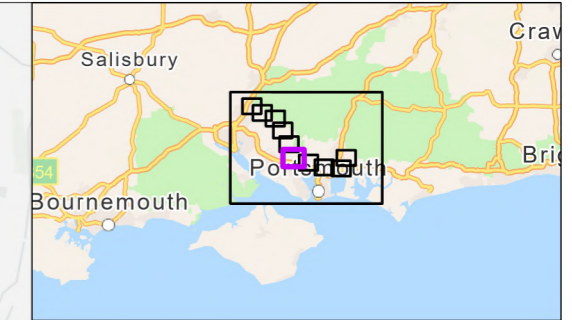
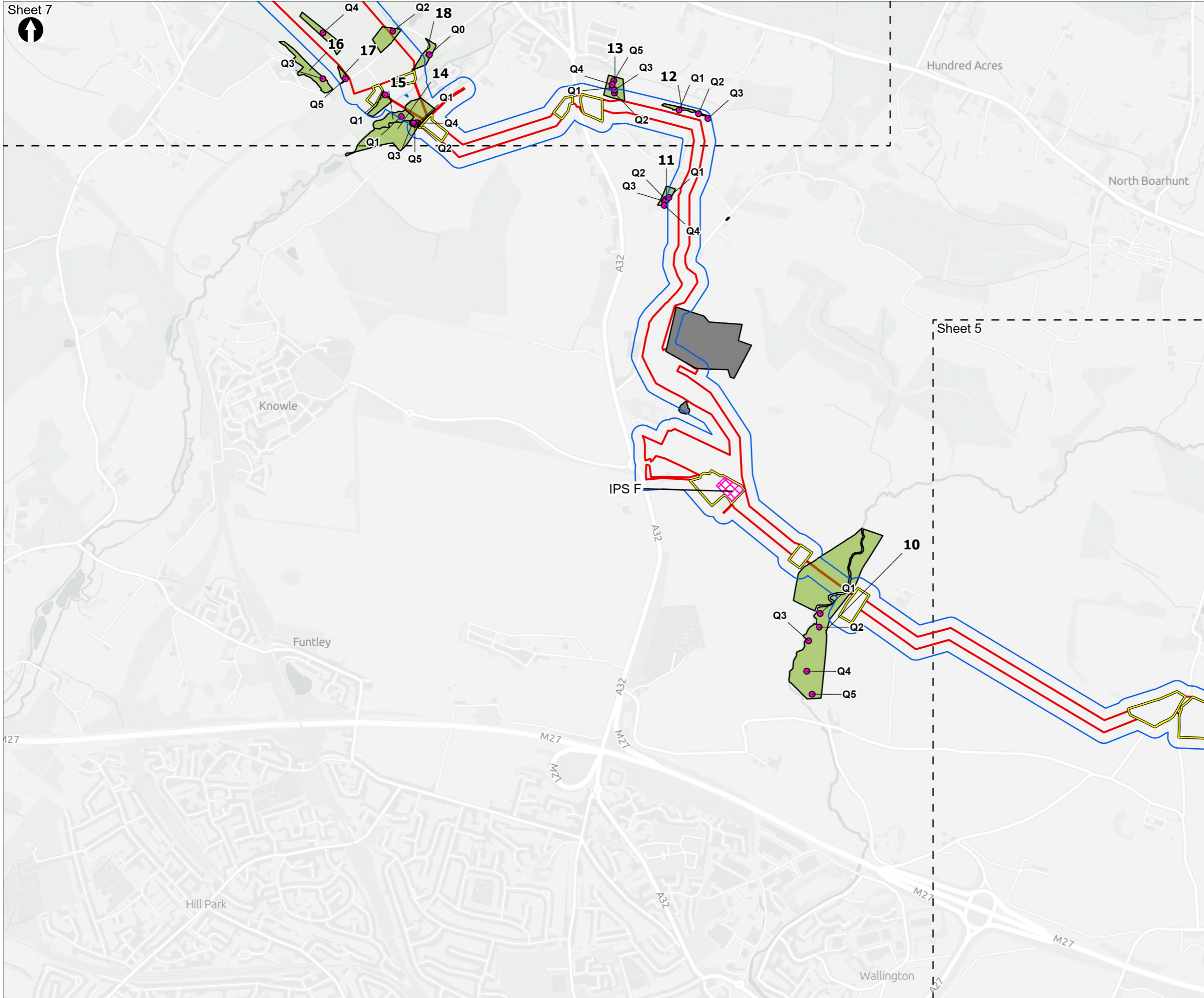


Figure 8.10  
 National Vegetation Classification within the field survey area  
 Sheet 5 of 11

Drawn <b>MW</b>	GIS Checked <b>DL</b>	Checked <b>MP</b>	Approved <b>AK</b>
Scale at A3 <b>1:17,000</b>	Status <b>Final</b>	Revision <b>05</b>	Security <b>STD</b>

Drawing Number  
**PC5223-RHD-ES-ZZ-D-Z-0035**





**Order Limits**  
 [Red line symbol] Order Limits  
 [Dashed line symbol] Sheet Extent Boxes 1:15K  
 [Yellow polygon symbol] Construction compounds

**National Vegetation Classification Survey**  
 [Blue outline symbol] Field survey area  
 [Green fill symbol] Surveyed  
 [Grey fill symbol] Not surveyed  
 [Pink dot symbol] Quadrat locations

**Above Ground Plant**  
 [Pink hatched symbol] Intermediate Pumping Station

**10 - Site number**  
**Q1 - Quadrat number**

Coordinate system: British National Grid; Datum: OSGB 1936  
 Data sources: © Crown copyright and database rights 2026 Ordnance Survey 0100031673. Sources: Esri, TomTom, Garmin, FAO, NOAA, USGS, © OpenStreetMap contributors, and the GIS User Community, Contains OS data © Crown Copyright and database right 2026. Contains data from OS Zoomstack

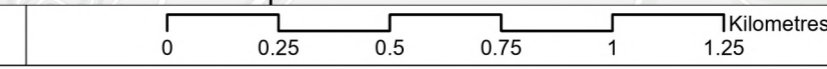
PROJECT TITLE  
 Hampshire Water Transfer and Water Recycling Project

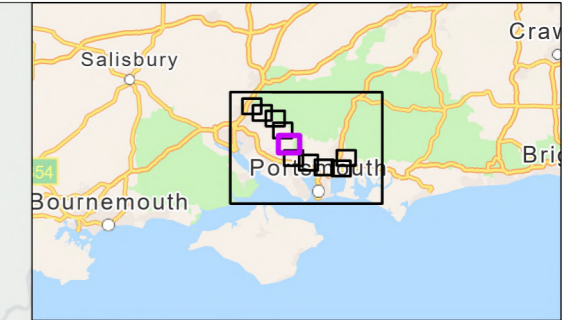
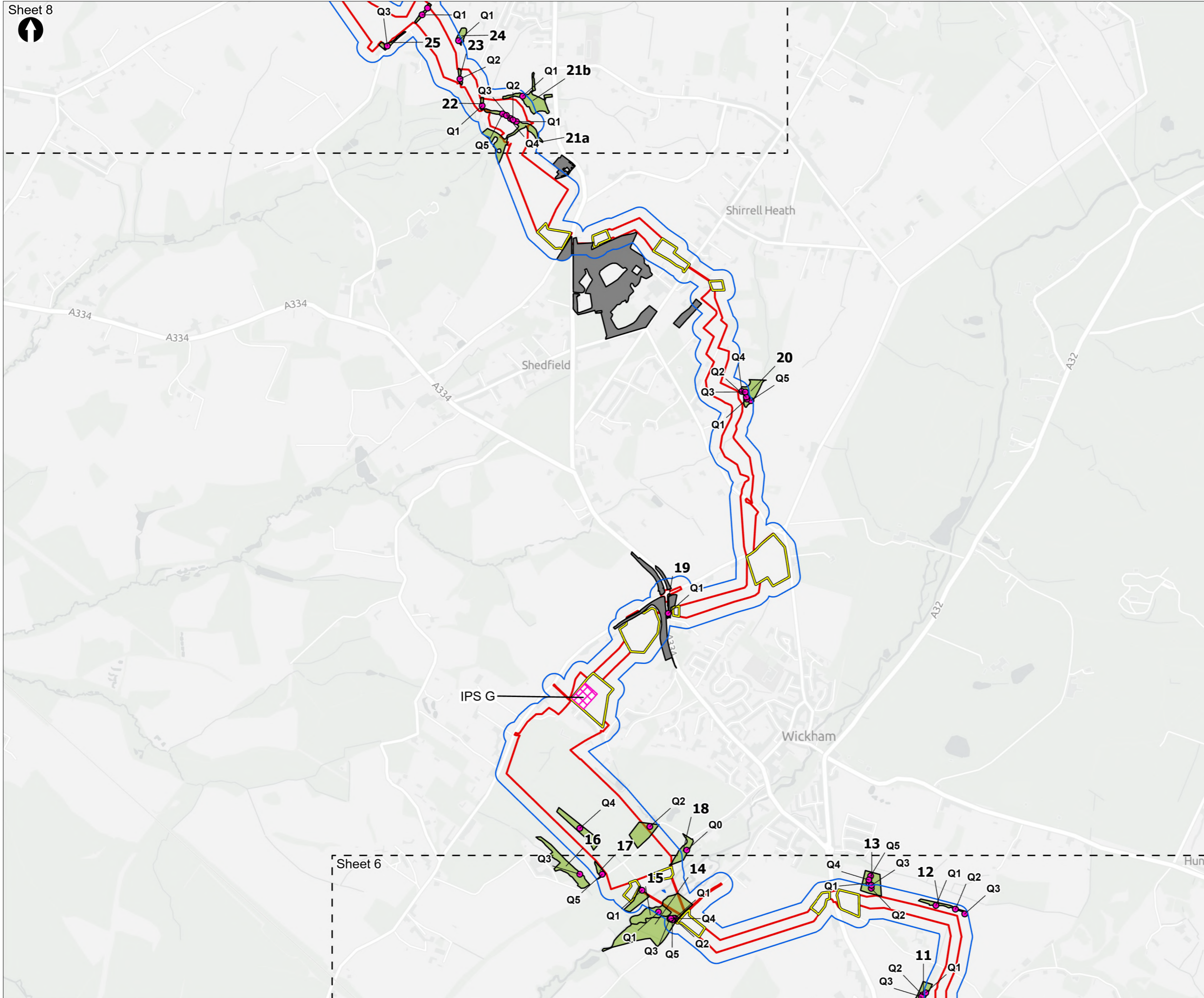


Figure 8.10  
 National Vegetation Classification within the field survey area  
 Sheet 6 of 11

Drawn <b>MW</b>	GIS Checked <b>DL</b>	Checked <b>MP</b>	Approved <b>AK</b>
Scale at A3 1:17,000	Status <b>Final</b>	Revision <b>05</b>	Security <b>STD</b>

Drawing Number  
**PC5223-RHD-ES-ZZ-D-Z-0035**





**Order Limits**  
 [Red line symbol]

**Sheet Extent Boxes 1:15K**  
 [Dashed line symbol]

**Construction compounds**  
 [Yellow outline symbol]

**National Vegetation Classification Survey**

**Field survey area**  
 [Blue outline symbol]

**Surveyed**  
 [Green fill symbol]

**Not surveyed**  
 [Grey fill symbol]

**Quadrat locations**  
 [Pink dot symbol]

**Above Ground Plant**

**Intermediate Pumping Station**  
 [Pink hatched symbol]

**10 - Site number**  
**Q1 - Quadrat number**

Coordinate system: British National Grid; Datum: OSGB 1936  
 Data sources: © Crown copyright and database rights 2026 Ordnance Survey 0100031673. Sources: Esri, TomTom, Garmin, FAO, NOAA, USGS, © OpenStreetMap contributors, and the GIS User Community, Contains OS data © Crown Copyright and database right 2026. Contains data from OS Zoomstack

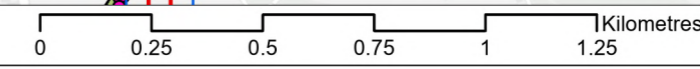
PROJECT TITLE  
 Hampshire Water Transfer and Water Recycling Project

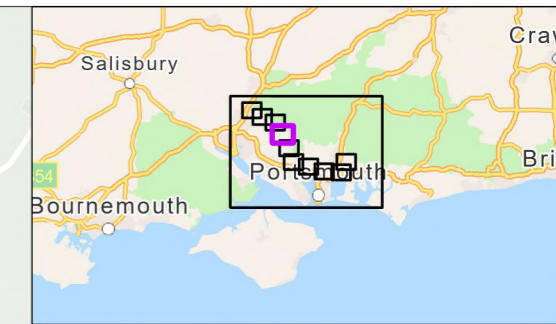
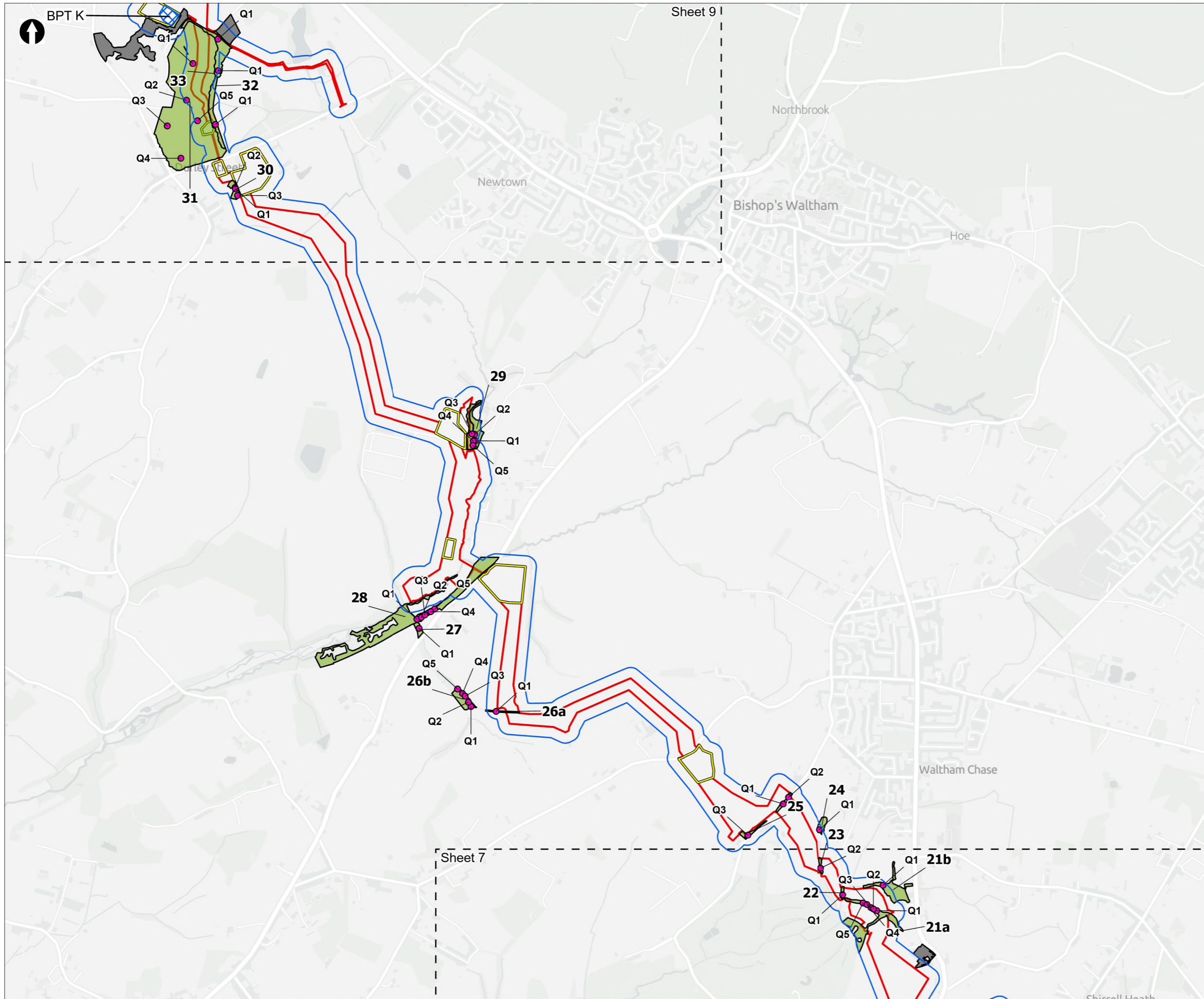


Figure 8.10  
 National Vegetation Classification within the field survey area  
 Sheet 7 of 11

Drawn <b>MW</b>	GIS Checked <b>DL</b>	Checked <b>MP</b>	Approved <b>AK</b>
Scale at A3 1:17,000	Status <b>Final</b>	Revision <b>05</b>	Security <b>STD</b>

Drawing Number  
**PC5223-RHD-ES-ZZ-D-Z-0035**





**Order Limits**  
 [Red line] Order Limits  
 [Dashed line] Sheet Extent Boxes 1:15K  
 [Yellow box] Construction compounds

**National Vegetation Classification Survey**  
 [Blue outline] Field survey area  
 [Green fill] Surveyed  
 [Grey fill] Not surveyed  
 [Pink dot] Quadrat locations

**Above Ground Plant**  
 [Blue cross-hatch] Break Pressure Tank

**10 - Site number**  
**Q1 - Quadrat number**

Coordinate system: British National Grid; Datum: OSGB 1936  
 Data sources: © Crown copyright and database rights 2026 Ordnance Survey 0100031673. Sources: Esri, TomTom, Garmin, FAO, NOAA, USGS, © OpenStreetMap contributors, and the GIS User Community, Contains OS data © Crown Copyright and database right 2026. Contains data from OS Zoomstack

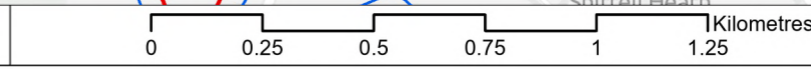
PROJECT TITLE  
 Hampshire Water Transfer and Water Recycling Project

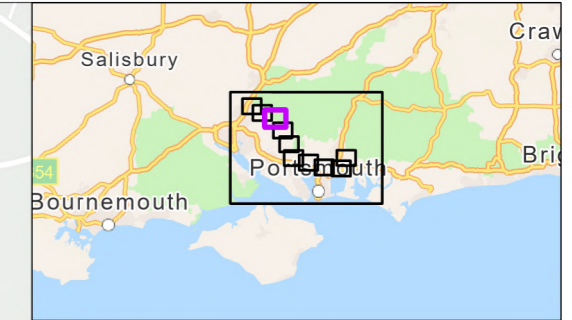
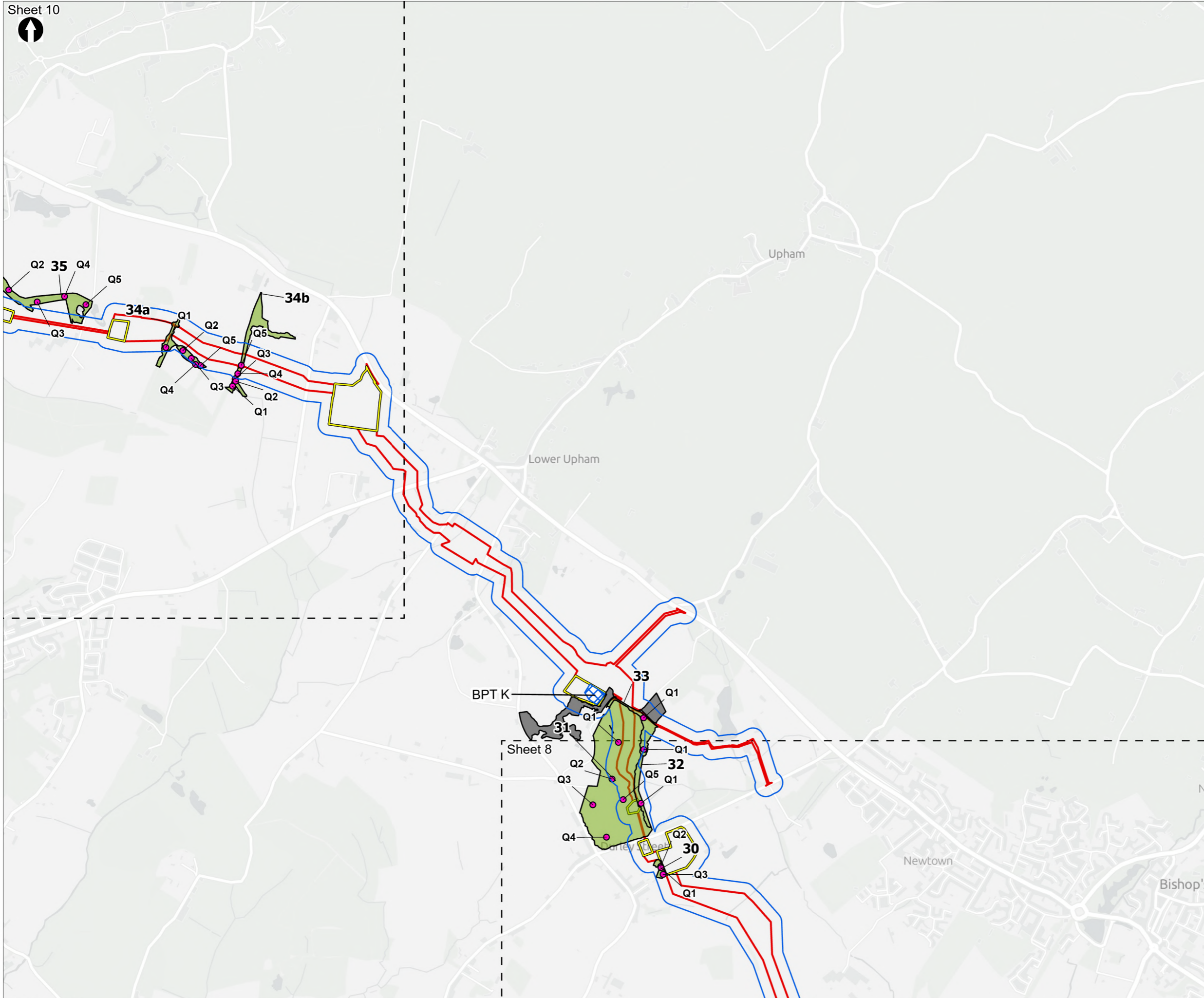


Figure 8.10  
 National Vegetation Classification within the field survey area  
 Sheet 8 of 11

Drawn <b>MW</b>	GIS Checked <b>DL</b>	Checked <b>MP</b>	Approved <b>AK</b>
Scale at A3 <b>1:17,000</b>	Status <b>Final</b>	Revision <b>05</b>	Security <b>STD</b>

Drawing Number  
**PC5223-RHD-ES-ZZ-D-Z-0035**





Order Limits  
 Sheet Extent Boxes 1:15K  
 Construction compounds  
**National Vegetation Classification Survey**  
 Field survey area  
 Surveyed  
 Not surveyed  
● Quadrat locations  
**Above Ground Plant**  
 Break Pressure Tank

**10** - Site number  
**Q1** - Quadrat number

Coordinate system: British National Grid; Datum: OSGB 1936  
 Data sources: © Crown copyright and database rights 2026 Ordnance Survey 0100031673. Sources: Esri, TomTom, Garmin, FAO, NOAA, USGS, © OpenStreetMap contributors, and the GIS User Community, Contains OS data © Crown Copyright and database right 2026. Contains data from OS Zoomstack

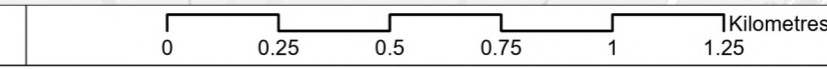
PROJECT TITLE  
 Hampshire Water Transfer and Water Recycling Project

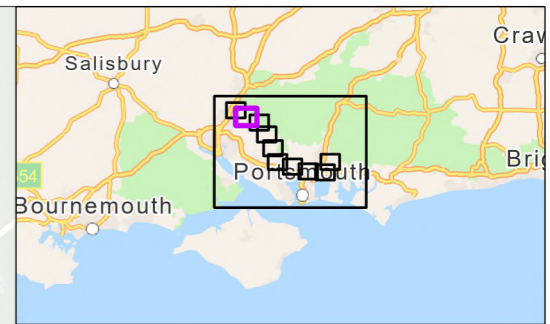
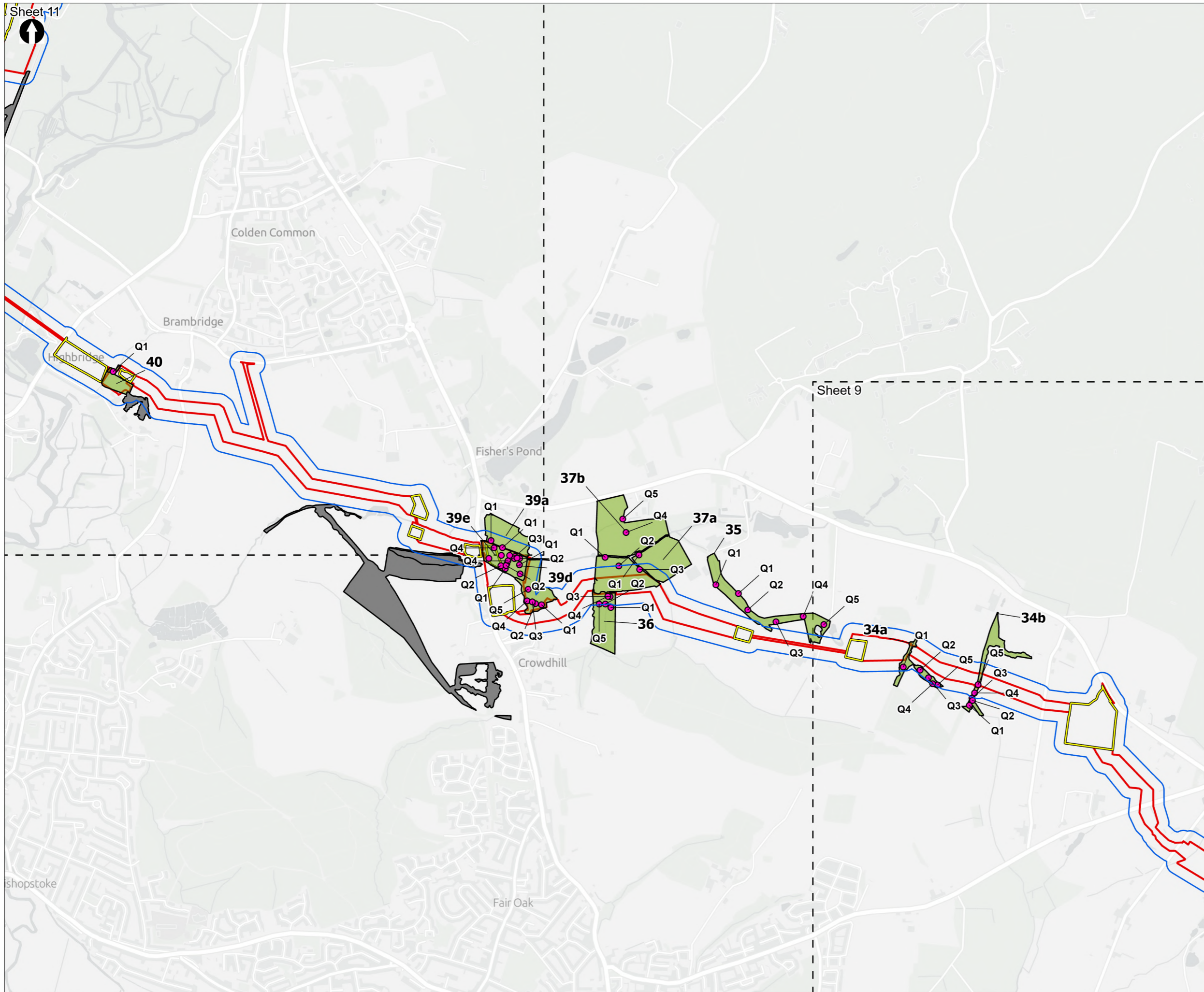


Figure 8.10  
 National Vegetation Classification within the field survey area  
 Sheet 9 of 11

Drawn <b>MW</b>	GIS Checked <b>DL</b>	Checked <b>MP</b>	Approved <b>AK</b>
Scale at A3 <b>1:17,000</b>	Status <b>Final</b>	Revision <b>05</b>	Security <b>STD</b>

Drawing Number **PC5223-RHD-ES-ZZ-D-Z-0035**





- Order Limits
- Sheet Extent Boxes 1:15K
- Construction compounds
- National Vegetation Classification Survey**
- Field survey area
- Surveyed
- Not surveyed
- Quadrat locations

**10 - Site number**  
**Q1 - Quadrat number**

Coordinate system: British National Grid; Datum: OSGB 1936  
 Data sources: © Crown copyright and database rights 2026 Ordnance Survey 0100031673. Sources: Esri, TomTom, Garmin, FAO, NOAA, USGS, © OpenStreetMap contributors, and the GIS User Community, Contains OS data © Crown Copyright and database right 2026. Contains data from OS Zoomstack

PROJECT TITLE  
 Hampshire Water Transfer and Water Recycling Project

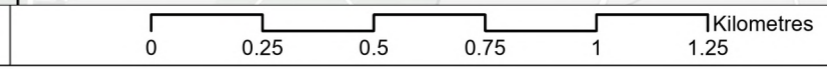


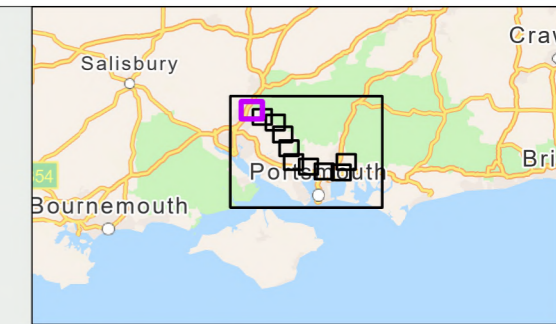
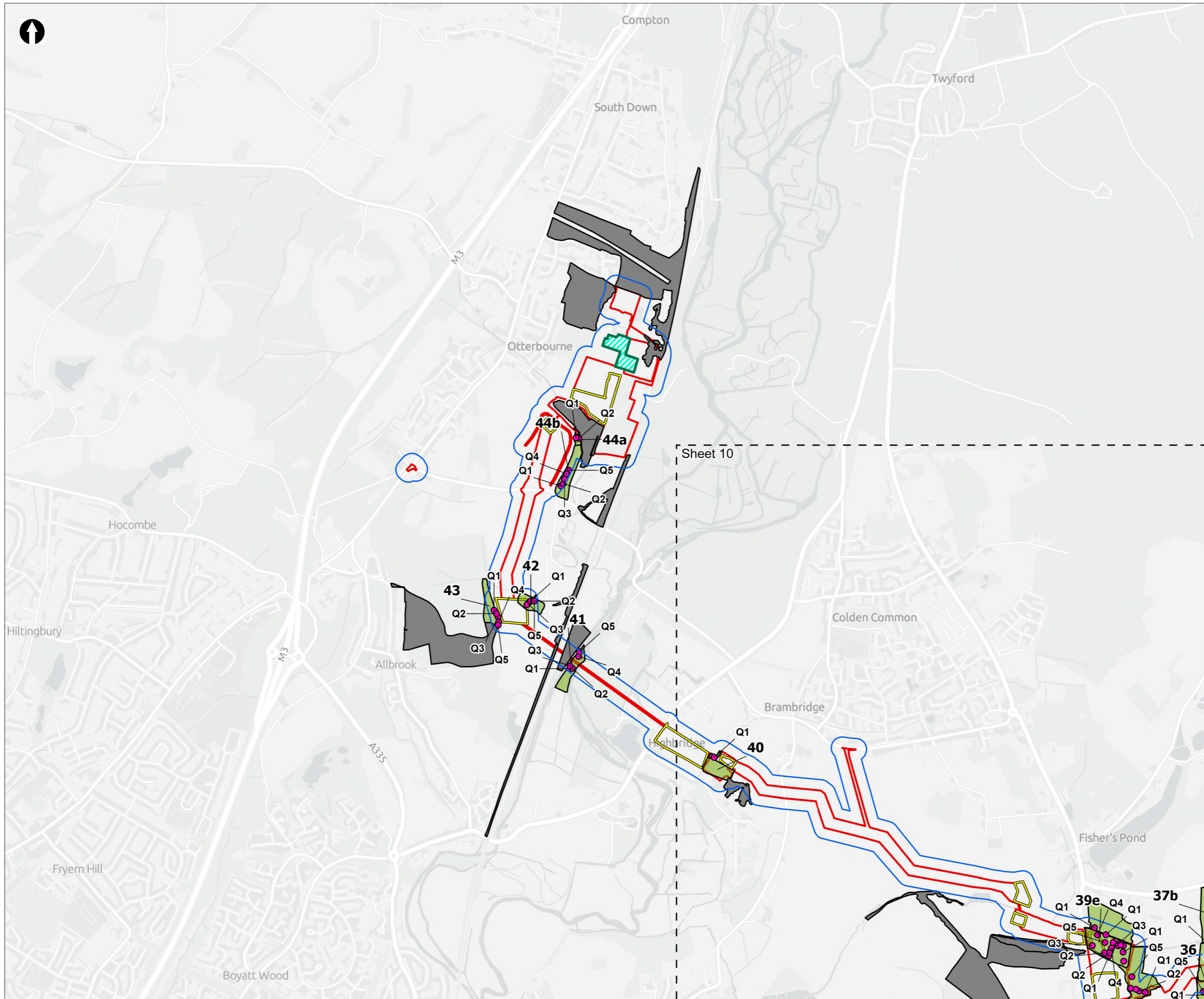
Figure 8.10  
 National Vegetation Classification within the field survey area  
 Sheet 10 of 11

Drawn <b>MW</b>	GIS Checked <b>DL</b>	Checked <b>MP</b>	Approved <b>AK</b>
Scale at A3 <b>1:17,000</b>	Status <b>Final</b>	Revision <b>05</b>	Security <b>STD</b>

Drawing Number  
**PC5223-RHD-ES-ZZ-D-Z-0035**

© Southern Water 2026  
 This document is issued for the party which commissioned it and for specific purposes connected with the captioned project only. It should not be relied upon by any other party or used for any other purpose. We accept no responsibility for the consequences of this document being relied upon by any other party, or being used for any other purpose, or containing any error or omission which is due to an error or omission in data supplied to us by other parties.





- Order Limits
  - Sheet Extent Boxes 1:15K
  - Construction compounds
  - Limits of Deviation for Otterbourne INNS Treatment Plant
- National Vegetation Classification Survey**
- Field survey area
  - Surveyed
  - Not surveyed
  - Quadrat locations

**10 - Site number**  
**Q1 - Quadrat number**

Coordinate system: British National Grid; Datum: OSGB 1936  
 Data sources: © Crown copyright and database rights 2026 Ordnance Survey 0100031673. Sources: Esri, TomTom, Garmin, FAO, NOAA, USGS, © OpenStreetMap contributors, and the GIS User Community, Contains OS data © Crown Copyright and database right 2026. Contains data from OS Zoomstack

PROJECT TITLE  
 Hampshire Water Transfer and Water Recycling Project



Figure 8.10  
 National Vegetation Classification within the field survey area  
 Sheet 11 of 11

Drawn <b>MW</b>	GIS Checked <b>DL</b>	Checked <b>MP</b>	Approved <b>AK</b>
Scale at A3 1:17,000	Status <b>Final</b>	Revision <b>05</b>	Security <b>STD</b>

Drawing Number  
**PC5223-RHD-ES-ZZ-D-Z-0035**

